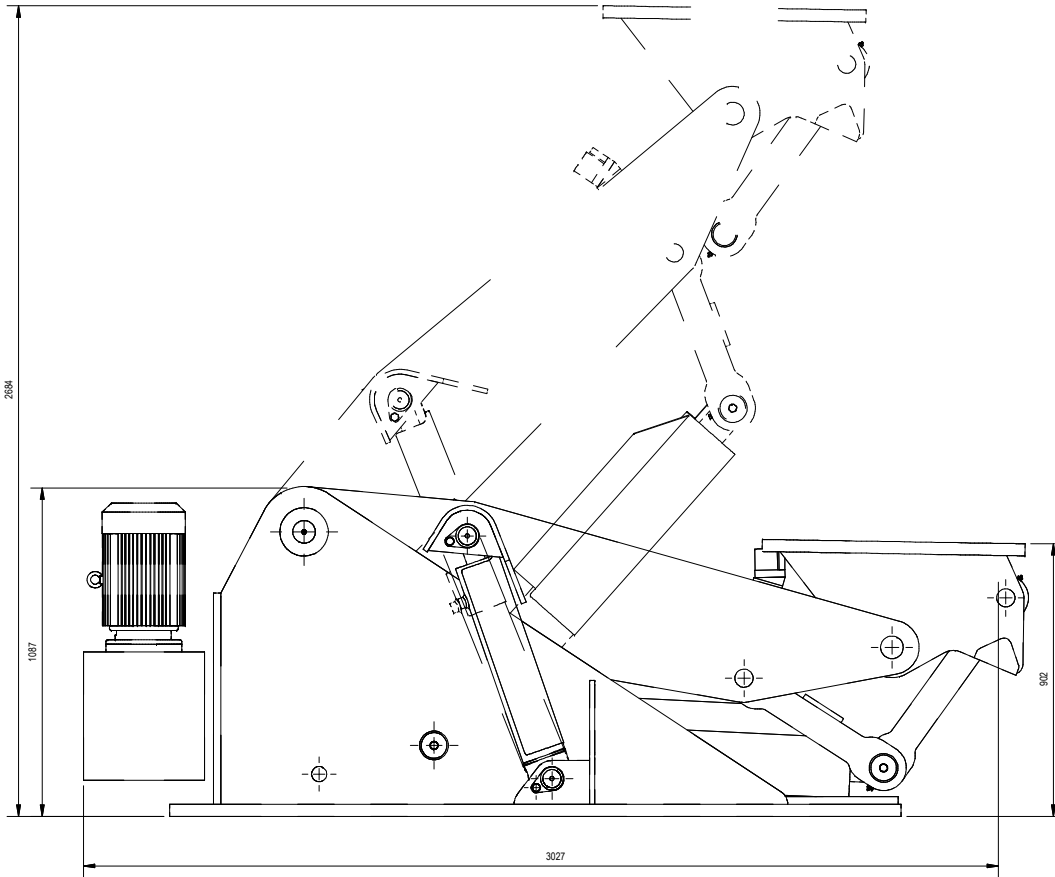


GENERAL ASSEMBLY NOTES:

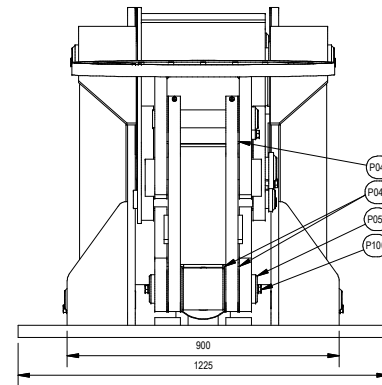
1. DIMENSIONS ARE EXACT WITH NO ALLOWANCE FOR CUTTING OR WELDING UNLESS OTHERWISE STATED.
2. SURFACE FINISH TO BE N8 FOR MACHINED PARTS UNLESS OTHERWISE STATED.
3. APPLY SHAFT PRESERVATIVE TO ALL MACHINED SURFACES INPLACE OF PAINT.
4. ALL EDGES AND HOLES TO BE DEBURRED.
5. ALL HOLES IN STRUCTURE TO BE DRILLED OR PUNCHED - NOT GAS CUT.
6. REMOVE ALL SHARP WELD IRREGULARITIES, SLAG & SPLATTER.
7. ALL WELDS TO BE 6 MM CONTINUOUS FILLET OR FULL PENETRATION BUTT WELD UNLESS OTHERWISE STATED.
8. ALL BUTT JOINTS / MITRE JOINTS TO BE FULL PENETRATION WELDS UNLESS OTHERWISE STATED.
9. A BOLSET CONSISTS OF A BOLT, NUT AND TWO WASHERS.
10. ALL BOLTS TO BE ISOMETRIC COARSE UNLESS OTHERWISE STATED.
11. ALL BOLTS NUTS AND WASHERS SHALL BE GRADE 8.8 IN ACCORDANCE WITH NZS 1252.
12. ALL WELDING TO BE GENERAL PURPOSE UNO, WORKMANSHIP AND PROCEDURES SHALL BE IN ACCORDANCE WITH NZS/AS 1554

ASSEMBLY PARTS DETAILS

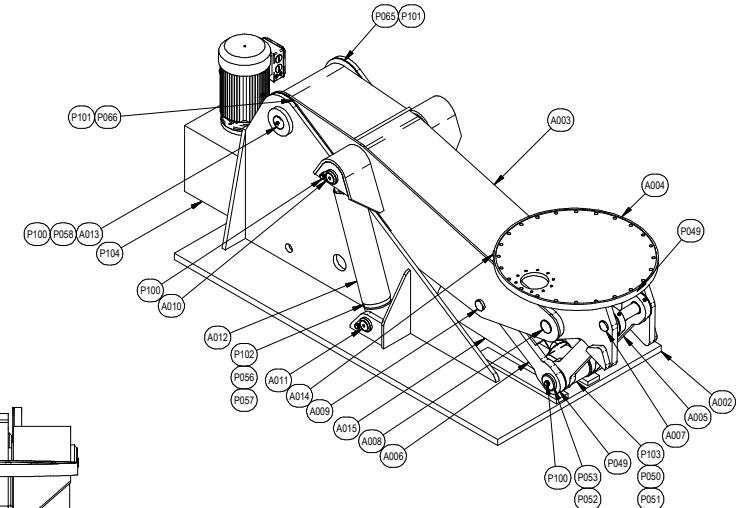
PART No:	DESCRIPTION	ITEM QTY	MATERIAL	MASS	REFERENCE
A002	Base	1	Welded Steel Mild	1595.7 kg	0990-A002
A003	Arm	1	Welded Steel Mild	555.1 kg	0990-A003
A004	Head Unit	1	Welded Steel Mild	323.9 kg	0990-A004
A005	Link	1	Welded Steel Mild	64.7 kg	0990-A005
A006	Link	1	Welded Steel Mild	51.5 kg	0990-A006
A007	Pin	1	Welded Steel Mild	8.2 kg	0990-A007
A008	Pin	1	Welded Steel Mild	17.0 kg	0990-A008
A009	Pin	1	Welded Steel Mild	10.9 kg	0990-A009
A010	Pin	2	Welded Steel Mild	5.5 kg	0990-A010
A011	Pin	2	Welded Steel Mild	5.5 kg	0990-A011
A012	Ram Cover	2	Welded Steel Mild	2.9 kg	0990-A012
A013	Pin	1	Welded Steel Mild	20.8 kg	0990-A013
A014	Arm Stop	1	Welded Steel Mild	9.8 kg	0990-A014
A015	Ram Cover	1	Welded Steel Mild	7.6 kg	0990-A015
P049	Washer	6	UHMW, Black	0.1 kg	0990-P049
P050	Bush	1	Alloy Bronze	1.4 kg	0990-P050
P051	Bush	2	Alloy Bronze	0.4 kg	0990-P051
P052	Pin	1	AISI 4140 (CD)	11.0 kg	0990-P052
P053	Pin Cap	4	Mild Steel	0.9 kg	0990-P053
P055	Pin	1	AISI 4140 (CD)	6.2 kg	0990-P055
P056	Bush	2	Alloy Bronze	0.8 kg	0990-P056
P057	Bush	2	Alloy Bronze	1.2 kg	0990-P057
P058	Bush	2	Alloy Bronze	0.5 kg	0990-P058
P065	Side Plate	1	UHMW, Black	1.4 kg	0990-P065
P066	Side Plate	1	UHMW, Black	1.4 kg	0990-P066
P100	Bolt Set M16 x 40	12		0.1 kg	
P101	Countersunk Head Cap Screws - M10 x 16	10	Mild Steel	0.0 kg	
P102	RAM (Hydropower, Standard 210, 5"x2.5"x500mm)	2		72.6 kg	
P103	RAM (Hydropower, Standard 210, 7"x4"x500mm)	1		20.2 kg	
P104	Oil Tank (Brevini 100 H, 7.5kW)	1		60.4 kg	



ELEVATION VIEW
SCALE 1 / 12.5



SIDE VIEW
SCALE 1 / 12.5



ISOMETRIC VIEW
SCALE 1 / 20

CERTIFICATION

P 6M APPROVAL

BY: _____

DATE: _____

CLIENT APPROVAL

BY: _____

DATE: _____



TITLE: 5 Tonne Manipulator
GENERAL ARRANGEMENT
GENERAL ARRANGEMENT

CLIENT DETAILS: PAGE MACRAE LTD

DRAWN BY: AMX Job No: -

DESIGNED BY: Brain S PROJECT No: 0990

DATE: 15/09/2009

SCALE: As Shown (A2) DRAWING No: A001

No.	BY	REVISION DESCRIPTION	DATE
1	AMX	ISSUED FOR CONSTRUCTION	8/02/10