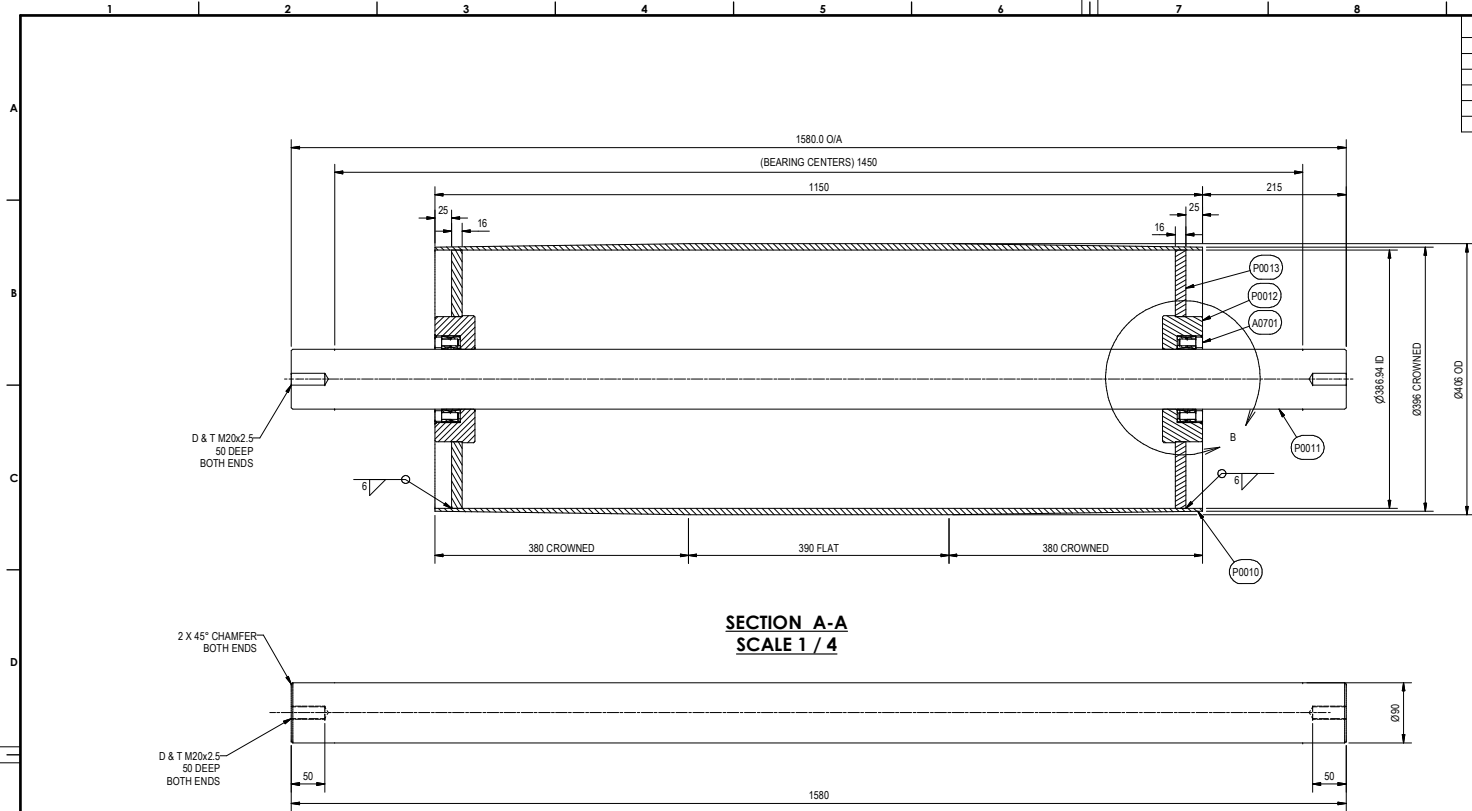


BILL OF MATERIAL					
P/N	QTY	DESCRIPTION	LENGTH	MATERIAL	REFERENCE
P0010	1	400NB SCH40 API LINEPIPE	1150	GR B	-
P0011	1	90 Dia ROUND	1580	BCQ	-
P0012	2	190 Dia ROUND	60	AISI 1018/20 (BR)	-
P0013	2	16 PLATE, 387 DIA	387	GR 250	-
A0701	2	TOLLOCK RING BLOCK TLK 200, 80 x 120			

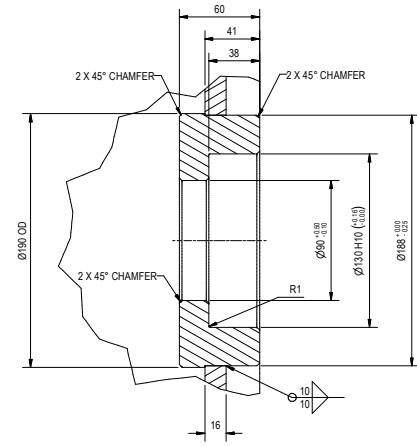
QUANTITIES SHOWN IN BOM ARE FOR ONE ASSEMBLY.
THERE ARE 4 ASSEMBLIES REQUIRED PER
DISTRIBUTION CONVEYOR (CV201)

TOTAL QUANTITIES ARE DEFINED ON MASTER BOM.
REFER DRAWING 11006-05-MB

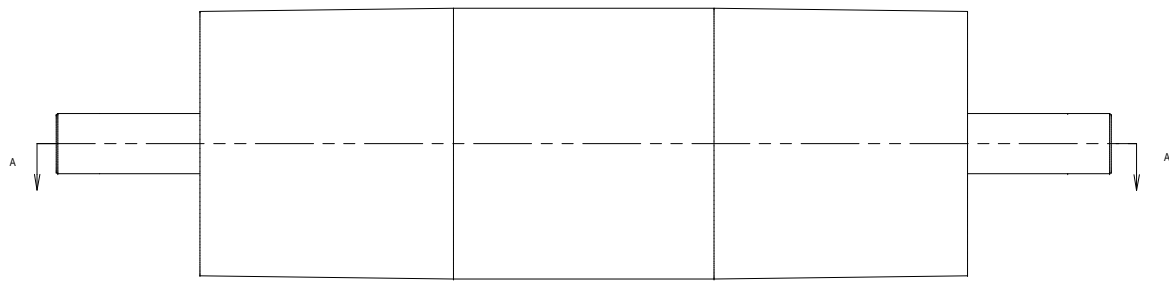


SECTION A-A
SCALE 1 / 4

SHAFT DETAIL
SCALE 1 / 4



DETAIL B
SCALE 1 / 2



ELEVATION VIEW
SCALE 1 / 4

GENERAL ASSEMBLY NOTES:

- DIMENSIONS ARE EXACT WITH NO ALLOWANCE FOR CUTTING OR WELDING UNLESS OTHERWISE STATED.
- SURFACE FINISH TO BE N8 FOR MACHINED PARTS UNLESS OTHERWISE STATED.
- APPLY SHAFT PRESERVATIVE TO ALL MACHINED SURFACES IN PLACE OF PAINT.
- ALL EDGES AND HOLES TO BE DEBURRED.
- ALL HOLES IN STRUCTURE TO BE DRILLED OR PUNCHED - NOT GAS CUT.
- REMOVE ALL SHARP WELD IRREGULARITIES, SLAG & SPLATTER.
- ALL WELDS TO BE 6 MM CONTINUOUS FILLET OR FULL PENETRATION BUTT WELD UNLESS OTHERWISE STATED.
- ALL BUTT JOINTS / MITRE JOINTS TO BE FULL PENETRATION WELDS UNLESS OTHERWISE STATED.
- A BOLTS SET CONSISTS OF A BOLT, NUT AND TWO WASHERS.
- ALL BOLTS TO BE ISOMETRIC COARSE UNLESS OTHERWISE STATED.
- ALL STEEL WORK TO BE BLASTED AND PAINTED TO PIKE RIVER COAL PAINT SPECIFICATIONS.
- ALL STRUCTURAL STEEL SHALL BE MILD STEEL IN ACCORDANCE WITH NZS/AS 3478:300 AND NZS/AS 3679:300 OR EQUIVALENTS.
- ALL STRUCTURAL STEEL FABRICATION AND ERECTION EXCEPT WELDING SHALL BE IN ACCORDANCE WITH NZS 3404.
- ALL WELDING TO BE GENERAL PURPOSE UNO. WORKMANSHIP AND PROCEDURES SHALL BE IN ACCORDANCE WITH NZS/AS 1554.
- ALL BOLTS NUTS AND WASHERS SHALL BE GRADE 8.8 IN ACCORDANCE WITH NZS 1252.
- ALL WELD METAL TP HAVE MINIMUM TENSILE STRENGTH OF 480 MPA.

REV	REVISION DESCRIPTION	BY	APP.	DATE
0	ISSUED FOR CONSTRUCTION	Mark	WG	22/05/2008
A	ISSUED FOR APPROVAL	MWL	WG	2/04/2008

DO NOT SCALE
DIMENSIONS IN MILLIMETRES
DRAFTING STANDARD: AS1100.101-1992

TOLERANCE TABLE

NOMINAL DIMENSIONS			DIMENSIONS WITH DECIMALS		
FROM	TO	TOLERANCE	NO. OF DECIMALS	TOLERANCE	
0	300mm	±1.0mm	X	DECIMALS	
300mm	1000mm	±1.5mm	XX	DECIMALS	
1000mm	3000mm	±2.0mm			

APP	DATE
DRAWN MWL	2/04/2008
PRODUCTION TM	
SALES WG	
DESIGN WG	29/05/2008
DRAFTING WG	2/04/2008

PIKE RIVER COAL
COAL PROCESSING PLANT
DISTRIBUTION CONVEYOR (CV201)
SNUB DRUM ASSEMBLY

SIZE	SCALE	DRAWING NUMBER	SHEET	REV
A1	1:4	11006-05-A0110	1 / 1	0