

PAINT SPEC:
Altex DW-208-0048.1
 This two coat paint system applies to the following steelwork:
 o All columns and associated wall bracing which are not encased in concrete.

Altex DW-208-0048.2
 This single coat paint system applies to the following steelwork:
 o All ceiling beams portal rafters and roof bracing.

Altex Protective Coatings Specification No. DW-208-0048.1
 Abrasive blast to SSPC SP10 (Sa2.5) to achieve a uniform jagged blast profile of between 35 and 50 µm.
 Apply coat 1 (Devran 223) to the prepared SP10 substrate.
 Apply a full coat of coat 2 (Devthane 379).
 All surfaces must be clean and dry before painting.

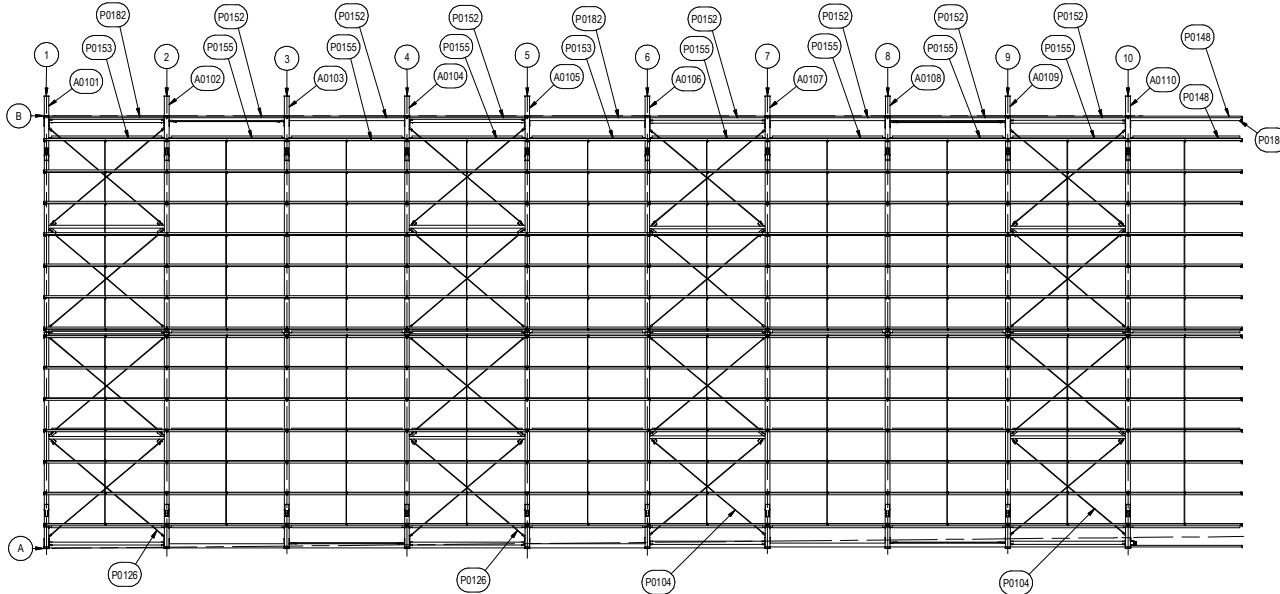
Interior Enclosed Steelwork between Roofline and Ceiling
Altex Protective Coatings Specification No. DW-208-0048.2
 Abrasive blast to SSPC SP10 (Sa2.5) to achieve a uniform jagged blast profile of between 35 and 50 µm.
 Apply coat 1 (Devran 223) to the prepared SP10 substrate.
 All surfaces must be clean and dry before painting.

NOTES - WELDING:
 WELDING SHALL COMPLY WITH AS NZS 1554.1
 MINIMUM WELD SIZES:
 FOR 12mm PLATE AND UNDER - CONTINUOUS FILLET UNO
 FOR 16mm PLATE AND OVER - CONTINUOUS FILLET UNO
 ALL FILLET WELDS TO BE GP UNLESS NOTED.
 ALL BUTT WELDS TO BE SP UNLESS NOTED.
 WELDING ELECTRODES SHALL BE E48XX TO AS 1553 UNO

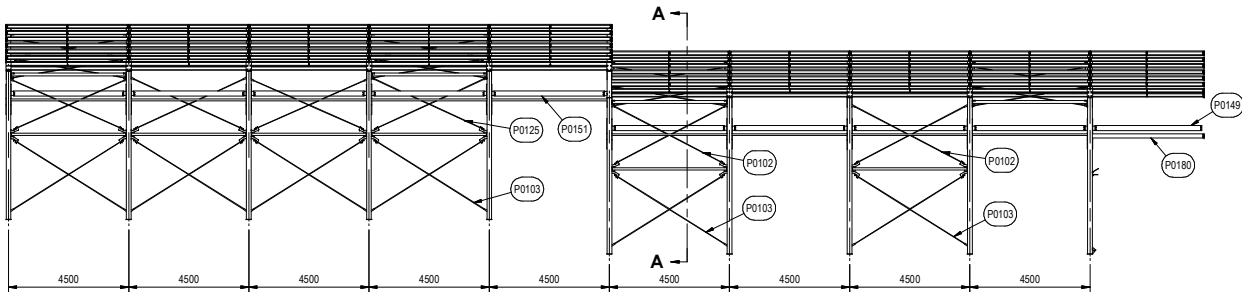
NOTES - GENERAL:
 BOLT SETS CONSIST OF:
 1x BOLT
 1x WASHER
 1x NUT
 REIDBRACE SETS CONSIST OF:
 1x BAR OF LENGTH STATED
 1x RB-RACE
 1x RB-END
 2x GRADE 8.8 PINS

PART DETAILS

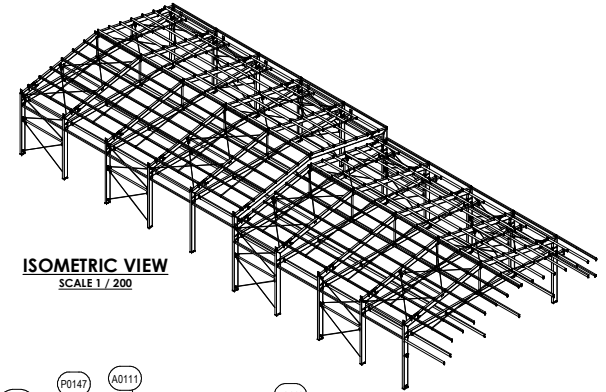
PART No.	QTY	DESCRIPTION	WIDTH	HEIGHT	THICKNESS	LENGTH	MATERIAL	MASS	REFERENCE
680		M12 x 30 BOLT SET					GR 8.8 (GALV)	0.0 kg	
136		M16 x 50 BOLT SET					GR 8.8 (GALV)	0.0 kg	
802		M20 x 60 BOLT SET					GR 8.8 (GALV)	0.0 kg	
A0101	1	COOKING ROOM - PORTAL 1						2179.7 kg	0802-A0101
A0102	1	COOKING ROOM - PORTAL 2						2172.5 kg	0802-A0102
A0103	1	COOKING ROOM - PORTAL 3						2173.0 kg	0802-A0103
A0104	1	COOKING ROOM - PORTAL 4						2172.5 kg	0802-A0104
A0105	1	COOKING ROOM - PORTAL 5						2167.8 kg	0802-A0105
A0106	1	COOKING ROOM - PORTAL 6						3357.4 kg	0802-A0106
A0107	1	OPENING ROOM - PORTAL 7						2453.7 kg	0802-A0107
A0108	1	OPENING ROOM - PORTAL 8						2454.3 kg	0802-A0108
A0109	1	OPENING ROOM - PORTAL 9						2453.8 kg	0802-A0109
A0110	1	OPENING ROOM - PORTAL 10						2460.7 kg	0802-A0110
A0111	20	SHS TIE 1						68.1 kg	0802-A0111
A0112	8	SHS TIE 2						69.5 kg	0802-A0112
P0101	10	FLAT 200 x 10	200 mm		10.0 mm	305 mm	GR 300	4.7 kg	0802-P0101
P0102	8	REIDBRACE SET - RBA20	20 mm			4681 mm	GR 300	21.4 kg	0802-P0102
P0103	16	REIDBRACE SET - RBA20	20 mm			4919 mm	GR 300	22.0 kg	0802-P0103
P0104	16	REIDBRACE SET - RBA20	20 mm			5496 mm	GR 300	23.4 kg	0802-P0104
P0125	8	REIDBRACE SET - RBA20	20 mm			4559 mm	GR 300	21.1 kg	0802-P0125
P0126	16	REIDBRACE SET - RBA20	20 mm			5533 mm	GR 300	23.5 kg	0802-P0126
P0147	120	PURLIN BRACE - to suiff DHS 150	15 mm	70 mm	1.2 mm	1199 mm	GR 250 (GALV)	1.3 kg	0802-P0147
P0148	15	PURLIN - DHS 150	65 mm	150 mm	1.2 mm	4268 mm	GR 250 (GALV)	12.7 kg	0802-P0148
P0149	5	PFC CHANNEL 200 x 75	75 mm	200 mm	12.0 mm	4004 mm	GR 300	91.6 kg	0802-P0149
P0150	8	PURLIN - DHS 150	65 mm	150 mm	1.2 mm	4488 mm	GR 250 (GALV)	13.4 kg	0802-P0150
P0151	45	PFC CHANNEL 200 x 75	75 mm	200 mm	12.0 mm	4133 mm	GR 300	94.6 kg	0802-P0151
P0152	7	PURLIN - DHS 150	65 mm	150 mm	1.2 mm	4494 mm	GR 250 (GALV)	13.4 kg	0802-P0152
P0153	28	PURLIN - DHS 150	65 mm	150 mm	1.2 mm	4593 mm	GR 250 (GALV)	13.7 kg	0802-P0153
P0154	10	PURLIN - DHS 150	65 mm	150 mm	1.2 mm	4489 mm	GR 250 (GALV)	13.4 kg	0802-P0154
P0155	98	PURLIN - DHS 150	65 mm	150 mm	1.2 mm	4494 mm	GR 250 (GALV)	13.4 kg	0802-P0155
P0180	2	PURLIN - DHS 150	65 mm	150 mm	1.2 mm	4265 mm	GR 250 (GALV)	12.7 kg	0802-P0180
P0182	2	PURLIN - DHS 150	65 mm	150 mm	1.2 mm	4593 mm	GR 250 (GALV)	13.7 kg	0802-P0182



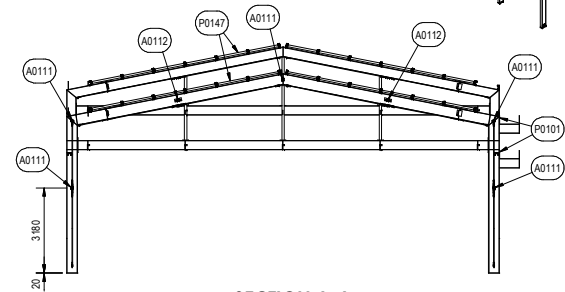
PLAN VIEW
SCALE 1 / 100



ELEVATION VIEW
SCALE 1 / 100



ISOMETRIC VIEW
SCALE 1 / 200



SECTION A-A
SCALE 1 / 100

REV	REVISION DESCRIPTION	BY	APP.	DATE
D	BOLT SET UPDATED FOR FASTBRACING	AMX		4/01/2009
C	CHANGE TO BOLTED TIES	AMX		22/12/2008
B	PAINT SPEC ADDED	AMX		17/12/2008
A	ISSUED FOR CONSTRUCTION	AMX		3/12/2008
1	DRAWING ISSUED FOR APPROVAL	AMX		23/10/2008

DO NOT SCALE
 DIMENSIONS IN MILLIMETRES
 DRAFTING STANDARD: AS1100.101-1992

NOMINAL DIMENSIONS		DIMENSIONS WITH DECIMALS	
FROM	TO	NO. OF DECIMALS	TOLERANCE
0	300mm	±1.0mm	X DECIMALS
300mm	1000mm	±1.5mm	XX DECIMALS
1000mm	3000mm	±2.0mm	

AMX Design

CAD Design Drafting
 Ph (07) 542 1849
 Fax (07) 572 1445
 Mob (021) 162 6278

APP	DATE	SIZE	SCALE	DRAWING NUMBER	SHEET	REV
AMX	13/10/2008	A1		0802-A0100	1 / 3	D

**COOKING & OPENING ROOM
 STRUCTURAL STEEL DETAILS
 COOKING & OPENING ROOM GA**